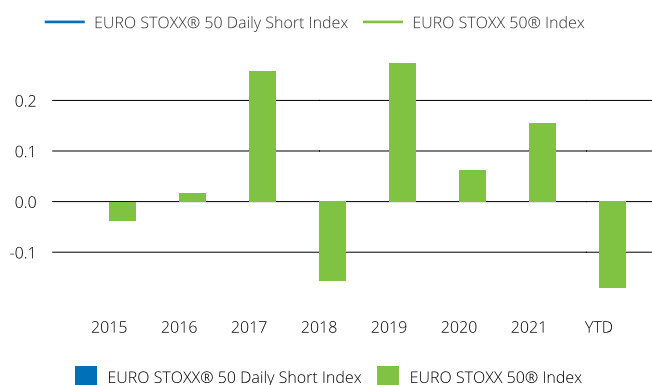
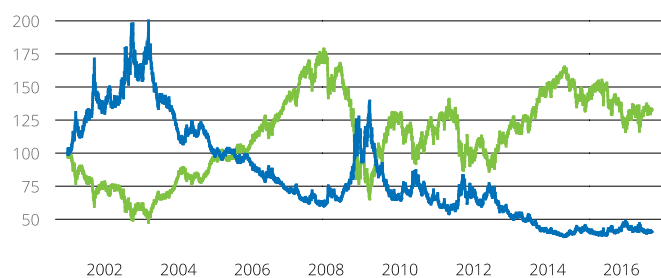




## SHORT INDICES

## EURO STOXX® 50 DAILY SHORT INDEX

Performance and annual returns<sup>4</sup>

## Methodology

The return of the EURO STOXX 50® Index is observed daily. Multiple times this return (as stated in the index name), with inverted sign, constitutes the main driver of return in the EURO STOXX® 50 Daily Short Index. Additionally, this return is enhanced by the interest earned on proceeds from short-sales and capital, less the borrowing costs on the underlying securities. The detailed methodology including the calculation formula can be found in our rulebook: [www.stoxx.com/indices/rulebooks.html](http://www.stoxx.com/indices/rulebooks.html)

## Versions and symbols

Index	ISIN	Symbol	Bloomberg	Reuters
Total Return - EUR	CH0029194971	SX5TS	SX5TS INDEX	.SX5TS
Total Return - EUR	CH0029194971	SX5TS	SX5TS INDEX	.SX5TS
Total Return - USD	CH0184409446	SX5GUS	SX5GUS INDEX	.SX5GUS
Total Return - USD	CH0184409446	SX5GUS	SX5GUS INDEX	.SX5GUS

Complete list available here: [www.stoxx.com/data/vendor\\_codes.html](http://www.stoxx.com/data/vendor_codes.html)

## CONTACT DETAILS

STOXX customer support | P +41 43 430 7272 | [customersupport@stoxx.com](mailto:customersupport@stoxx.com) | <https://qontigo.com/support/>

## DISCLAIMER

STOXX, Deutsche Börse Group and their licensors, research partners or data providers do not make any warranties or representations, express or implied, with respect to the timeliness, sequence, accuracy, completeness, currentness, merchantability, quality or fitness for any particular purpose of its index data and exclude any liability in connection therewith. STOXX, Deutsche Börse Group and their licensors, research partners or data providers are not providing investment advice through the publication of indices or in connection therewith. In particular, the inclusion of a company in an index, its weighting, or the exclusion of a company from an index, does not in any way reflect an opinion of STOXX, Deutsche Börse Group or their licensors, research partners or data providers on the merits of that company. Financial instruments based on the STOXX® indices, DAX® indices or on any other indices supported by STOXX are in no way sponsored, endorsed, sold or promoted by STOXX, Deutsche Börse Group or their licensors, research partners or data providers.

## BACKTESTED PERFORMANCE

This document contains index performance data based on backtesting, i.e. calculations of how the index might have performed prior to launch if it had existed using the same index methodology and based on historical constituents. Backtested performance information is purely hypothetical and is provided in this document solely for information purposes. Backtested performance does not represent actual performance and should not be interpreted as an indication of actual performance.

## CUSTOMIZATION

The index can be used as a basis for the definition of STOXX® Customized Indices, which can be tailored to specific client or mandate needs. STOXX offers a wide range of customization, in terms of component selection, weighting schemes and personalized calculation methodologies.

<sup>4</sup> STOXX data from Dec. 29, 2000 to Oct. 31, 2016

(USD, total return - gr), all data as of Apr. 29, 2022